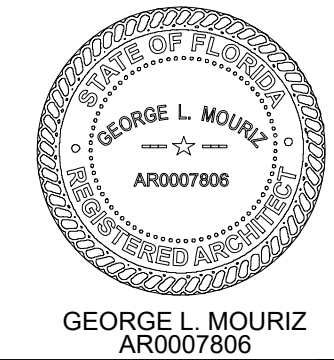


PZ25-12000001

08/06/2025

[illegible]

**POMPANO BEACH APTS**  
LOCATED AT:  
**POMPANO BEACH**  
FOR:  
**PORTMAN HOLDINGS**

ARCHITECT'S BUILDING CODE STATEMENT/  
TO THE BEST OF THE ARCHITECT'S  
KNOWLEDGE THE PLANS AND SPECIFICATIONS  
COMPLY WITH THE FLORIDA BUILDING CODE  
EIGHTH EDITION (2023) AND THE  
APPLICABLE FIRE SAFETY STANDARDS AS  
DETERMINED BY THE LOCAL AUTHORITY  
AND CHAPTER 633 FLORIDA STATUTES.

COPYRIGHT © 2024 MSA ARCHITECTS, INC.  
THE ARCHITECTURAL DESIGN AND DETAIL  
DRAWINGS FOR THIS BUILDING AND/OR  
OVERALL PROJECT ARE THE SOLE  
PROPERTY OF AND ALL RIGHTS ARE  
RESERVED BY THE ARCHITECT, THEIR USE  
FOR REPRODUCTION, CONSTRUCTION, OR  
DISTRIBUTION IS PROHIBITED UNLESS  
AUTHORIZED IN WRITING BY THE ARCHITECT.

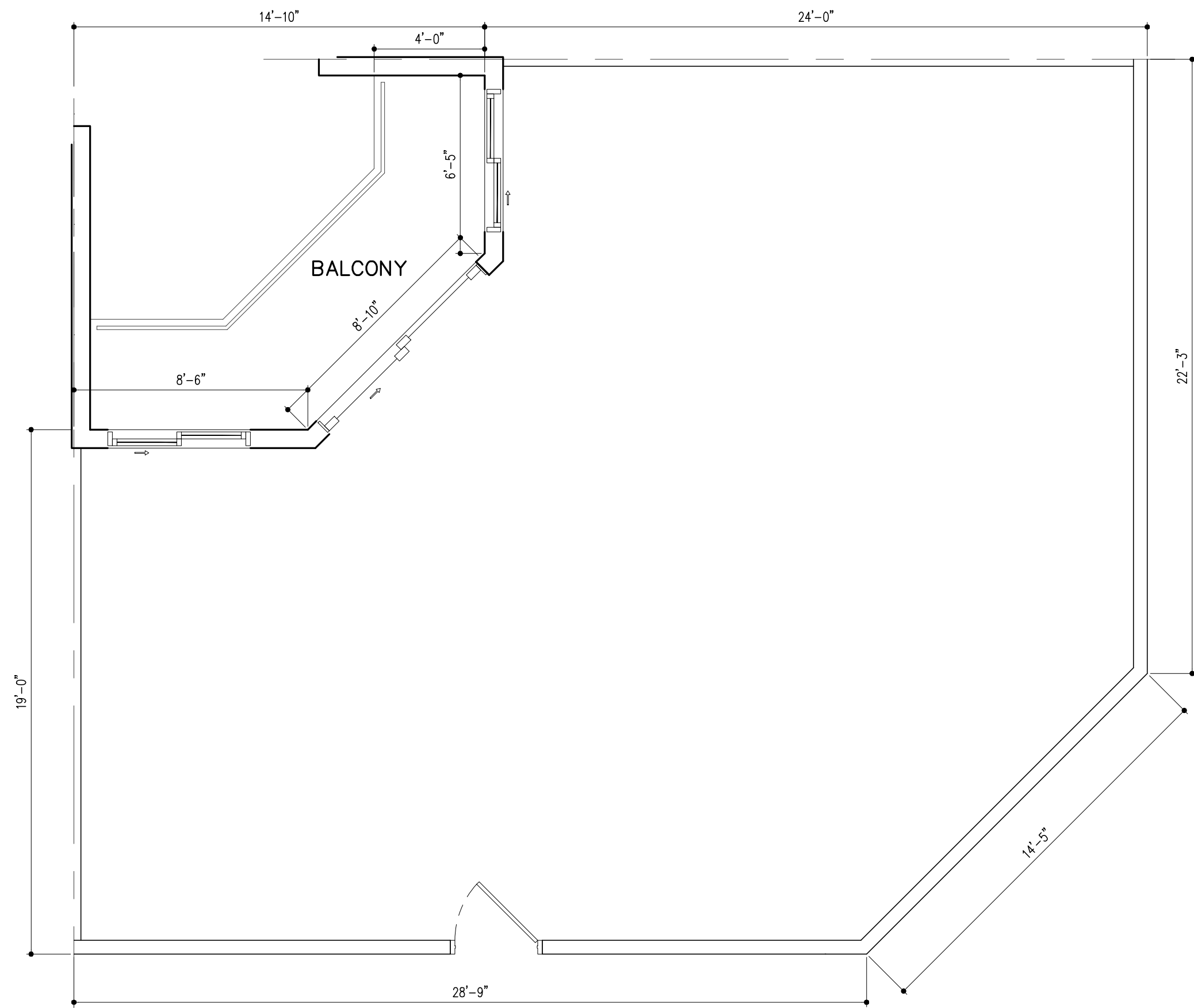


**MSA  
ARCHITECTS, INC.**  
8950 SW 74TH CT #1513  
MIAMI, FL 33156  
P: (305) 273-9911

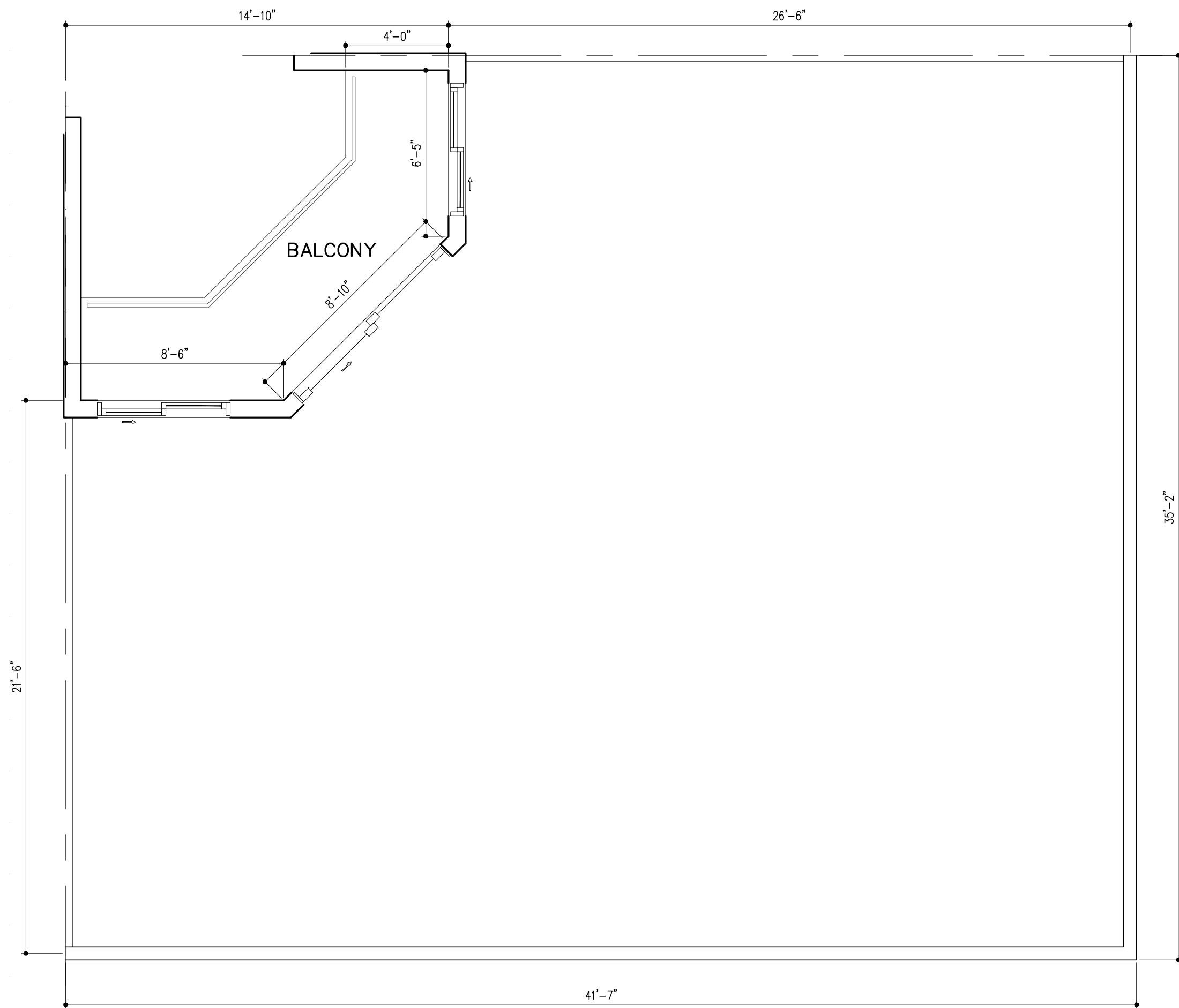


**MSA**  
**ARCHITECTS**  
ARCHITECTURE & PLANNING

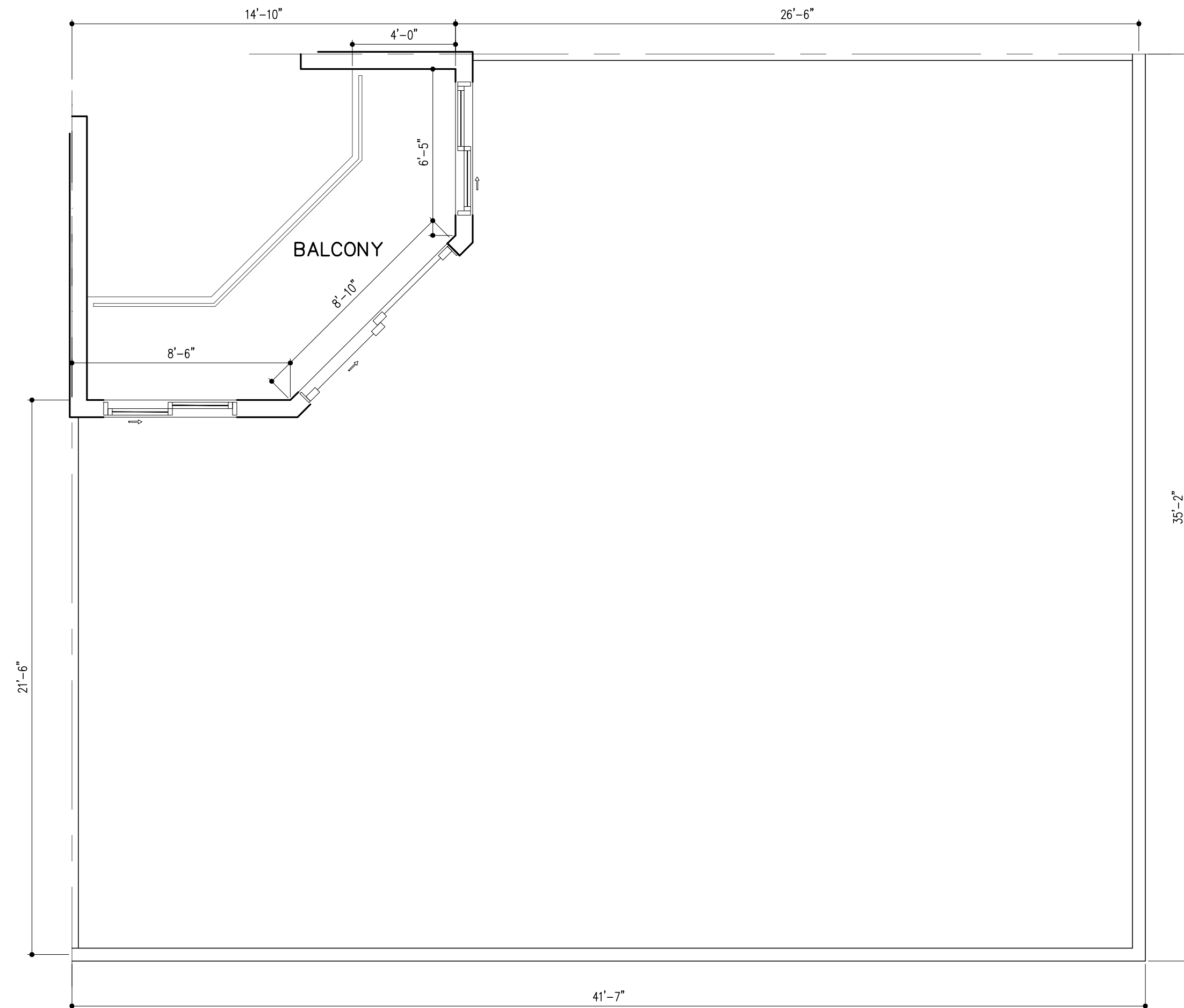
Project No: 2254.prj  
Contract Date:  
Scale:  
TITLE:  
**UNIT PLANS**  
SHEET:



**UNIT D2-LEV1** (3BD/2BTH)  
 A/C AREA = 3,461 SQ. FT. (1 DU'S)  
 BALCONY = 47 SQ. FT.



## UNIT D2-LEV2 (3BD/2BTH) (1 DU'S)



## UNIT D2-LEV3 (3BD/2BTH) (1 DU'S)

## UNIT PLANS

SCALE:  $1/4" = 1'-0"$